

Thermostatic Steam Traps & Air Eliminators - TH21



Description

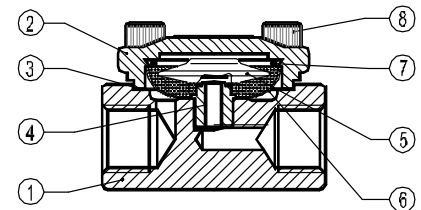
The TH 21 series thermostatic steam traps and air eliminators are specifically designed for use on process equipment such as kettle, cookers, sterilizers, food, chemical and laundry equipment. Connections are female screwed or flanged.



Article no.	Size	Price
BSP		
445624	1/2"	£177.40
FLANGED		ON REQUEST

Materials

- 1 Body C 22.8
 - 2 Cover C 22.8
 - 3 * Gasket Graphite
 - 4 * Seat Stainless Steel
 - 5 * Thermostatic Element Stainless Steel
 - 6 * Strainer Screen Stainless Steel
 - 7 * Spring Stainless Steel
 - 8 Bolts Steel 8.8
- * Available Spare Parts



Flow Rate Capacity in Kg/h

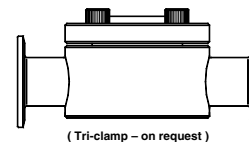
		DIFFERENTIAL PRESSURE (bar)															
MODEL / SIZE		0.2	0.3	0.5	1	1.5	2	3	4	6	8	10	13	15	20	22	
TH21	1/2"	70	120	140	255	330	385	455	510	600	670	700	720	750	775	795	
TH21 LC	1/2"	45	55	70	95	125	135	180	200	270	315	330	360	370	405	415	

Thermostatic Steam Traps & Air Eliminators - TH21SS



Description

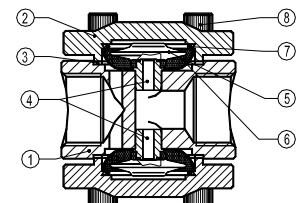
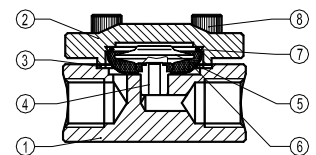
The TH 21SS series thermostatic steam traps and air eliminators are specifically designed for use on process equipment such as kettle cookers, sterilizers, food, chemical and laundry equipment. Connections are female screwed or flanged.



Article no.	Size	Price
BSP		
440254	1/2"	£285.30
348417	3/4"	£310.90
348418	1"	£426.10
FLANGED		ON REQUEST

Materials

- 1 Body AISI316 / 1.4401
 - 2 Cover AISI316 / 1.4401
 - 3 * Gasket St.St./Graphite
 - 4 * Valve seat AISI304 / 1.4301
 - 5 * Thermostatic element Stainless steel
 - 6 * Strainer screen AISI304 / 1.4301
 - 7 * Spring AISI302 / 1.4300
 - 8 Bolts St.Steel A2-70
- * Available Spare Parts



Flow Rate Capacity in Kg/h

		DIFFERENTIAL PRESSURE (bar)															
Model / Size		0.2	0.3	0.5	1	1.5	2	3	4	6	8	10	13	15	20	21	
TH21SS 15 - 25		70	120	140	255	330	385	455	510	600	670	700	720	750	775	795	
TH21LCSS 15 - 25		45	55	70	95	125	135	180	200	270	315	330	360	370	405	415	
TH21/2SS 15 - 25		140	240	280	510	660	770	910	1020	1200	1340	1400	1440	1500	1550	1590	

Capacities shown refer to condensate at 10°C below saturated steam temperature (standard type-S thermostat). Thermostats for 5° C type-H and 30° type-L, also available. Capacities for cold condensate discharge at 20°C are two to three times greater.